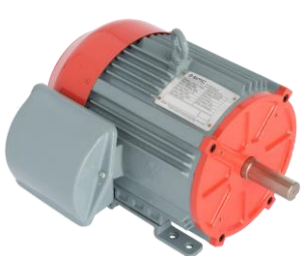


L1 L2 L3



SMC Motor Controller



SMC Smart Motor

If it were possible to mount everything inside the package unit, would that be acceptable?

It is preferable to install the Motor Controller inside the RTU when space is available. The Supervisor Controller should be mounted to the exterior of the unit so as not to interfere with the cellular transceiver signal.



SMC Supervisor Controller

Are these ckts/cable to be added by us?

No. See below.

The Motor Data Cable and the Motor Power Cable will be supplied with the motor.

In your experience will the existing wiring be acceptable for this configuration?

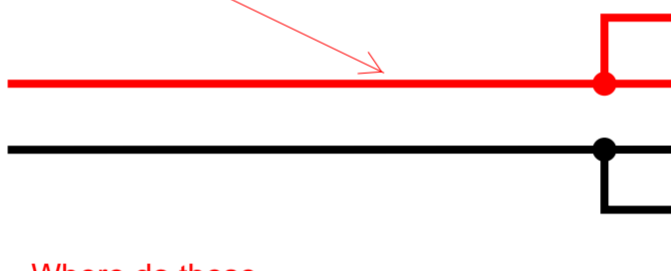
I'm guessing this is NON-SWITCHED power source from a thermostat?

This is from the 24v transformer inside the RTU control board section.

Is this cable furnished? If not what type is acceptable?

This is the 2 pair 22 AWG shielded cable

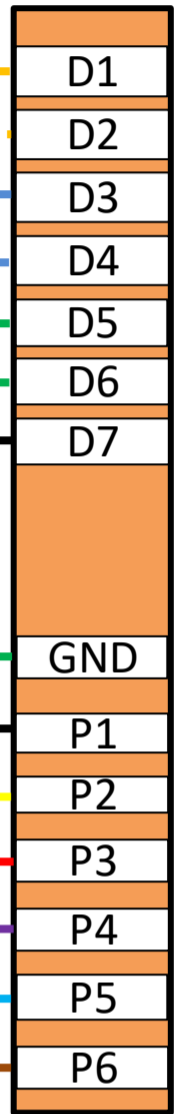
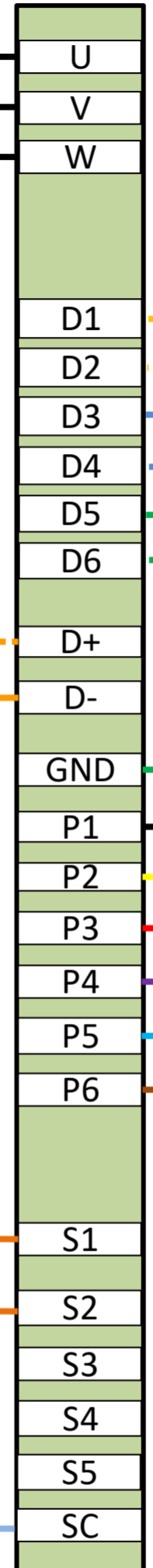
24 VAC



Where do these terminate?

These come from the RTU control board that were previously connected to the relay or contactor that we are by-passing.

Speed Control Input



Motor Data Cable

Motor Power Cable

M2 - Modbus Cable

Speed Control Input